



GRP Anti-Slip Flooring

Has been used in industrial and commercial environments for some considerable time. It provides an excellent safeguard against the potential for slips leading to accidents, injury and often compensation claims. This GritPlate is virtually indestructible / shatter-proof and will withstand severe climatic variables. It can be used anywhere there is a potential slip hazard.

GritPlate flooring from Scandic Coating is an immensely resilient material used in applications where high strength / light weight characteristics are required. This anti-slip flooring is virtually indestructible, totally shatterproof, and will withstand severe climatic variables. Available from 2.5 – 10mm thick and to a max size of 3.5m x 1.5m – cut FOC.

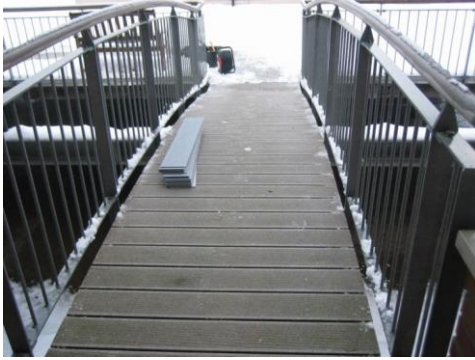
Benefits:

- Non Corrosive
- Non Conductive
- Manufactured to Size
- Easy to Install
- Very Hard Wearing
- Choice of Thickness / Color

Color Range:

Black, Grey (RAL 7001) and Yellow (08 E 51) as standard, other colors available from the following ranges and A Color Matching Service is also available.

- B.S. 4800 Color Range
- B.S. 5252 Color Range
- RAL Color Range



2,500 GritPlate sheets installed 2015

Applications:

- Railway Platforms
- Footbridges
- Disabled Ramps
- Piers & Pontoons
- Inspection Platforms
- Forklift Truck Paths
- Swimming Pools
- Grating Covers
- Truck Trailer Floors
- Tail-lifts
- Decking Strips
- Marinas and Jetties



Grit Profile

The grit incorporated into GritPlate is a fused-Alumina that is available in the following grades: Ultra-Fine (Barefoot), Fine, Medium, Coarse and Ultra-Coarse.

Cleaning / Maintenance and Life Expectancy

GritPlate is a tough material that can withstand “aggressive” cleaning such as the use of stiff brushes and power-washers as detailed in our guide to the [Cleaning & Maintenance of GritPlate](#).

With little maintenance GritPlate will retain its active anti-slip properties for 15 – 20 years depending on application. In addition, due to the high level UV-protective coating the sheet will not suffer from significant color fade for at least 15 years.

Durbar (Chequer Plate)

A traditional anti-slip flooring in a choice of colors to a max size of 2400mm x 1200mm per sheet. Also available with an ultra-fine gritted surface for added slip protection.



Encapsulated Ply

An increasingly popular flooring widely used in the construction of access ramps and pedestrian bridges. Available in any non-metallic RAL color and in various thicknesses from 9 – 25mm, cut to size FOC.



Fire Rating

Available as “General Purpose” or to BS 476 Pt6/7 Class II or Class 1 fire rating. Also available as a Phenolic gritted sheet as used by London Underground.



Installation Guide

Each installation will have its own criteria but there are a number of operations and procedures that are applicable in all circumstances. Ask for our Installation Guide.

